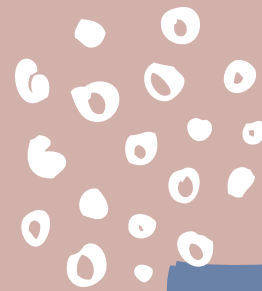




# Watercolor for Beginners



Saturday, September 9th 9:30am - 3:00pm

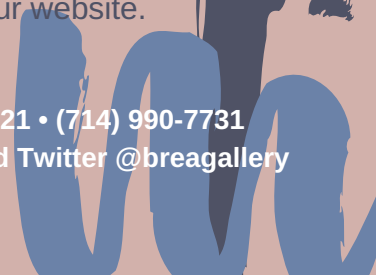
This is a one day workshop for those who want to learn the basics of watercolor. It is aimed at the person who has wanted to paint for years and has no background in the medium. Will this class teach you everything you have ever wanted to know about watercolor? Not by a long shot! But this fun, low-pressure class will make you very comfortable with the medium and will give you the skills needed to continue painting in the future.



Instructor: Judy Schroeder • Ages 16+ • Cost: \$80 (+supply list)  
To find out more about Judy, visit her website [www.schroederstudio.com](http://www.schroederstudio.com).

To register visit [breagallery.com](http://breagallery.com) or call the Gallery at (714) 990-7731.  
For our refunds, cancellations, and photography policies, please visit our website.

City of Brea Art Gallery • Civic & Cultural Center • 1 Civic Center Circle • Brea, CA 92821 • (714) 990-7731  
[breagallery.com](http://breagallery.com) • [breagallery@cityofbrea.net](mailto:breagallery@cityofbrea.net) • Follow us on Facebook, Instagram, and Twitter @breagallery



# Watercolor for Beginners

## Supply List

---

**Travel Watercolor Palette:** Cotman Compact Set with 14 half pans and travel brush OR Van Gogh Watercolor Pocket Box with 12 pan colors and a travel brush OR Cotman Field Plus Set with 12 half pans, a small brush, water bottle and cup OR Rembrandt Luxury Watercolor Pocket Box with 12 half pans and sable brush. You need palettes with a nice mixing area.

**Brushes:** Size 10 or 12 round brushes. Simmons synthetic watercolor brushes, Richeson, or Loew Cornell are good. They should be supple and go to a good point when wet.

**Paper:** Sketchbook with at least 90# paper or 11"x15" sheets, preferably 140# to stay flat after wet washes. Avoid the Strathmore tablet because it has a very hard surface and is difficult to work with. **Suggestions:** Cheap Joe's Warehouse 140# 1/4 sheet sample pack (11"x15") or Utrecht Educators' Watercolor Pad 140# 8.8"x11.8".

**Other:** plastic wide mouth container for water, 12"x16" board for paper support - foamcore (1/2" thickness), plywood, or masonite, bulldog clips to hold the paper to the board, pencil, gum or kneaded eraser, box of regular Kleenex

## Even More Workshops

---

- Modern Calligraphy for Beginners with Angi Phillips - October 28
- The Sky is the Limit Watercolor Workshop with Debbie Abshear - November 4
- Mosaic Votives with Dawn Mendelson - November 21, 28, & December 5
- Watercolor: Keep it Simple and Strong with Keiko Tanabe - December 9
- Using Design to Enhance Watercolors with Pete Morris - December 16